

# The first 16

SINCE Fide, the World Chess Federation, adopted the Elo rating system in 1970 organisers have competed with one another to hold the statistically strongest event. The super-tournament just ended in Turin, won jointly by Swedish GM Ulf Andersson and Russian world champion Anatoly Karpov, surpassed all previous records. It was a seven-man double-round competition with an average rating of 2627 — the first ever "category 16" on the Fide scale.

The cross-table below reveals the story of the tournament. An early loss to Yugoslav Lubomir Ljubojevic put Karpov behind, but the gap eased when sensitive West German grandmaster Robert Hubner withdrew due to a bad stomach ache after round six. Andersson, meanwhile, having won in round three, was cruising along with draws. Karpov caught him when gaining revenge on Ljubojevic in the second half and the two rivals shared the glory as they had in London.

I have spoken in the past about the hazards of selecting players for tournaments on rating alone. While the proportion of draws in Turin was high, the chess was neither exceptionally invigorating nor especially dull. One game certainly stands out from the first half: Karpov's demolition of Hungarian Lajos Portisch. Two months previously in London, Portisch had his pet Najdorf defence braised by the world champion's innovative opening play. Here he switches to the mild Petroff, Karpov adds paprika, result — one Hungarian goulashed.

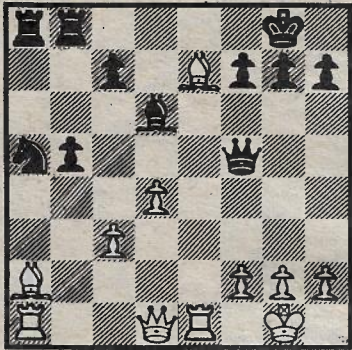
### PETROFF DEFENCE

A. KARPOV	L. PORTISCH
1. e4	e5
2. Nf3	Nf6
3. Nxe5	d6
4. Nf3	Nxe4
5. d4	d5
6. Bd3	Be7
7. 0-0	Nc6
8. Re1	Bf5
9. c4!?	Nb4
10. Bf1	0-0
11. a3	Nc6
12. Nc3	Nxc3
13. bxc3	dxc4
14. Bxc4	Bd6
15. Bg5	Qd7
16. Nh4!	Na5
17. Ba2	b5
18. a4!	a6

Or 18...bxa4 19.Bd5 c6 (19...Bxh2 ch 20.Kxh2 Qxd5 21.Re5 or 19...Nb3 20.Rxa4 Qxa4 21.Nxf5 both win for White) 20.Bf3 and the a-pawn falls.

- 19. axb5                    axb5
- 20. Nxf5                    Qxf5
- 21. Be7                     Rfb8

Obviously, bringing White's rook to the seventh rank with 21...Bxe7 22.Rxe7 is not desirable, and 21...Rfe8 22.Bxd6 Rxe1 ch 23.Qxe1 cxd6 24.Bb1 Qc8 25.Bd3 followed by Qb1 would cost Black a pawn.



### 22. g4!!

A stunning pawn thrust by Karpov in front of his own king. In 99 cases out of 100 such a move, merely to harass the opposition's queen, would be positionally disastrous. Here the exception proves much more effective than 22.Bxd6 cxd6 23.Re7 d5.

### 22. ... Qd7

Instead 22...Qg6 23.Bxd6 Qxd6 24.Qf3 promises White a safe edge while 23.h4! (threatening to snare the queen by h5 and g5) may be even stronger.

### 23. Bxf7 chl

The climax of White's combination. Portisch's king must grovel aside, for 23...Kxf7 24.Rxa5! Rxa5 25.Qb3 ch Kg6 26.Re6 ch Kf7 27.Rxd6 dis ch Kxe7 28.Rxd7 ch Kxd7 29.Qf7 ch followed by gobbling the kingside pawns gives an easily winning endgame.

- 23. ...                    Kh8
- 24. Bxd6                    Qx17
- 25. Re7                     Qf8

On the natural 25...Qf6 Karpov would have 26.Bxc7! Nb3 (26... Qxe7 27.Bxb8) 27.Bxb8! when 27...Rxa1? allows back-rank mate by 28.Re8 ch.

- 26. Bc5                    Qf4
- 27. Qe2                    h6
- 28. Re4                    Qf7
- 29. Re5                    Nc4
- 30. Rxa8                    Rxa8
- 31. Rf5                    Qg6
- 32. Qe4                    Kh7
- 33. h3                     Ra1 ch
- 34. Kg2                    Rc1
- 35. Bb4                    Nd6
- 36. Bxd6                    cxd6
- 37. Qd3                    d5
- 38. f3!                     Resigns

The threat is simply h4, followed by h5, and Black is quite helpless against it. For example 38...Ra1 39.h4! Ra2 ch 40.Kh3 Ra6 (40...Kg8 41.Rf8 ch Kh7 42.Rh8 ch) 41.h5 followed by a lethal discovered check.

MURRAY CHANDLER

### TURIN, ITALY, 1982

	Rating	1	2	3	4	5	6	7	Total
1. Karpov	(2720)	XX	½½	½	01	½½	½½	½(1)	7
2. Andersson	(2605)	½½	XX	½½	½½	½½	½	½(1)	7
3. Portisch	(2630)	0½	½½	XX	½1	0½	½1	½(1)	6½
4. Ljubojevic	(2600)	10	½½	0½	XX	½	½½	½(1)	6½
5. Spassky	(2625)	½½	½½	½	0½	XX	½½	0(1)	6
6. Kavalek	(2590)	½½	0½	½0	½½	½½	XX	½(1)	5½
7. Hubner	(2620)	½(0)	½(0)	½(0)	½(0)	1(0)	½(0)	XX	3½

(games in brackets decided by default)